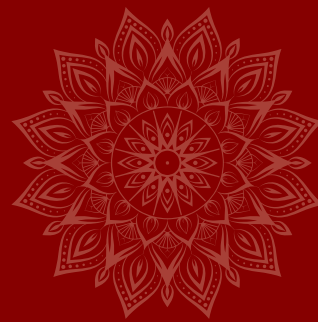




OUR OUTLETS



SCAN TO FIND US



DELHI
TANDOORI
CHAAP

100% PURE VEG

DINE - IN MENU

OUR STORY

FROM DELHI TO DOSA LAND

We brought the chaap-ter to Chennai in 2018!

What started in Anna Nagar is now an 8-stop flavour ride across the city.

NORTH KA TADKA, NOW A SOUTH CRAVING!

we prepare to scale new heights and serve the best cuisine

that celebrates the rich flavours and exceptional quality of North Indian cuisine.

TANDOORI CHAAP

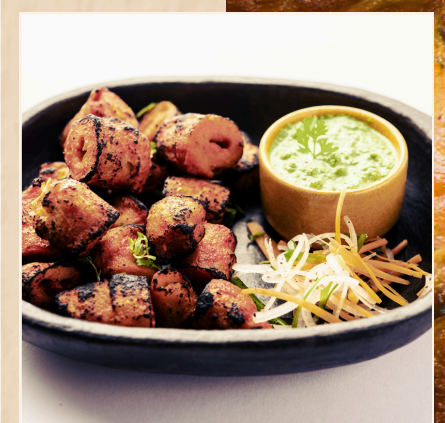


MALAI CHAAP

TANDOORI CHAAP

| | HALF | FULL |
|---------------------------|------|------|
| STUFFED CHAAP | 120 | 220 |
| MALAI CHAAP | 110 | 200 |
| AFGHANI CHAAP | 110 | 200 |
| MASALA CHAAP | 110 | 200 |
| CHAT PATTA CHAAP | 110 | 200 |
| PUDINA CHAAP | 110 | 200 |
| ACHARI CHAAP | 110 | 200 |
| MIA KHALIFA CHAAP | 120 | 220 |
| DELHI TANDOORI SPL. CHAAP | 120 | 220 |
| MAHARAJA CHAAP | 120 | 220 |
| PERI PERI CHAAP | 120 | 220 |
| ERANI CHAAP | 120 | 220 |
| LEMON CHAAP | 120 | 220 |
| TANDOORI BUTTER CHAAP | 120 | 220 |
| MIX PLATTER CHAAP | - | 230 |
| GARLIC CHAAP | 120 | 220 |
| PANEER TIKKA | 120 | 220 |
| MALAI PANEER TIKKA | 120 | 220 |
| PUDINA PANEER TIKKA | 120 | 220 |
| MUSHROOM TIKKA | - | 170 |
| EXTRA CREAM | | 30 |

*Additional charges of Rs.10/- applicable for parcel.





TANDOORI CHAAP ROLL

| | |
|-----------------------|-----|
| STUFFED CHAAP ROLL | 100 |
| MALAI CHAAP ROLL | 90 |
| AFGHANI CHAAP ROLL | 90 |
| MASALA CHAAP ROLL | 90 |
| CHAT PATTA CHAAP ROLL | 90 |
| PUDINA CHAAP ROLL | 90 |
| ACHARI CHAAP ROLL | 100 |
| PANEER TIKKA ROLL | 100 |
| PERI PERI CHAAP ROLL | 100 |



FRY ITEMS

| | |
|---------------------------|-----|
| KFC CHAAP (4PCS) | 150 |
| BABY DOLL (4PCS) | 150 |
| KFC LOLLIPOP CHAAP (4PCS) | 150 |



COMBOS

(12.00 PM - 03.30 PM & 06.30 PM - 11.00 PM)

| | |
|--|-----|
| 2 ROMALI ROTI WITH TAWA CHAAP | 120 |
| 2 ROTI WITH PANEER BUTTER MASALA | 120 |
| 1 ROTI, JEERA RICE, PANEER BUTTER MASALA | 140 |
| WITH DAL FRY SALAD | |
| FRIED RICE WITH GOBI MANCHURIAN | 140 |



NORTH INDIAN FOOD

| | HALF | FULL |
|------------------------|------|------|
| PALAK PANEER | 110 | 200 |
| PANEER BUTTER MASALA | 115 | 210 |
| KADAI PANEER | 120 | 220 |
| TAWA PANEER | 120 | 220 |
| PANEER DO PYAZA | 115 | 210 |
| BUTTER PANEER | 110 | 200 |
| PANEER TIKKA MASALA | 120 | 220 |
| MIX VEG | 95 | 170 |
| MUSHROOM MASALA | 100 | 180 |
| ALOO GOBI MASALA | 100 | 180 |
| JEERA ALOO | 95 | 170 |
| TAWA MUSHROOM | 110 | 200 |
| GREEN PEAS MASALA | 110 | 200 |
| DAL FRY | 100 | 180 |
| DAL MAKHANI | 110 | 200 |
| SPL DAL MAKHANI | 120 | 220 |
| DAL PUNJABI | 110 | 200 |
| MALAI KOFTA | 110 | 200 |
| MUSHROOM PANEER MASALA | 120 | 220 |
| SHAHI PANEER | 115 | 210 |





SPL CHAAP GRAVY

| | | |
|------------------------|-----|-----|
| CHAAP BUTTER MASALA | 100 | 180 |
| TAWA CHAAP | 100 | 180 |
| KADAI CHAAP | 100 | 180 |
| RARA CHAAP MASALA | 100 | 180 |
| BELLI RAM CHAAP MASALA | 110 | 200 |
| CHAAP ROGAN JOSH | 100 | 180 |

CHINESE STARTERS

| | | |
|---------------------------------------|--|-----|
| GOBI 65 | | 130 |
| MUSHROOM 65 | | 140 |
| PANEER 65 | | 170 |
| GOBI MANCHURIAN (DRY / GRAVY) | | 170 |
| MUSHROOM MANCHURIAN (DRY / GRAVY) | | 190 |
| PANEER MANCHURIAN (DRY / GRAVY) | | 210 |
| CHAAP MANCHURIAN (DRY / GRAVY) | | 170 |
| CHILLI CHAAP (DRY / GRAVY) | | 170 |
| CLASSIC CHILLI PANEER (DRY / GRAVY) | | 220 |
| CLASSIC CHILLI MUSHROOM (DRY / GRAVY) | | 190 |
| CLASSIC CHILLI GOBI (DRY / GRAVY) | | 170 |
| MUSHROOM PEPPER FRY | | 190 |
| PANEER PEPPER FRY | | 210 |
| BABYCORN PEPPER FRY | | 180 |

INDIAN BREADS

| | |
|------------------------|----|
| ROTI | 30 |
| BUTTER ROTI | 40 |
| NAAN | 30 |
| BUTTER NAAN | 40 |
| ALOO NAAN | 60 |
| PANEER NAAN | 60 |
| GARLIC NAAN | 60 |
| CHUR CHUR NAAN | 60 |
| KULCHA | 30 |
| BUTTER KULCHA | 40 |
| PANEER KULCHA | 60 |
| ALOO PARATHA | 50 |
| PANEER PARATHA | 60 |
| TANDOORI WHEAT PARATHA | 50 |
| RUMALI ROTI | 30 |
| ROASTED PAPAD | 20 |



*Additional charges of Rs.10/- applicable for parcel.

RICE

| | |
|-------------------------------|-----|
| VEG FRIED RICE | 110 |
| GOBI FRIED RICE | 140 |
| MIXED VEG FRIED RICE | 160 |
| PANEER FRIED RICE | 150 |
| SCHEZWAN VEG FRIED RICE | 150 |
| SCHEZWAN GOBI FRIED RICE | 160 |
| SCHEZWAN MIXED VEG FRIED RICE | 180 |
| SCHEZWAN PANEER FRIED RICE | 170 |
| MUSHROOM FRIED RICE | 150 |
| SCHEZWAN MUSHROOM FRIED RICE | 160 |
| VEG PULAO | 110 |
| PANEER PULAO | 160 |
| JEERA RICE | 110 |
| TAWA PULAO | 140 |
| VEG BIRYANI | 110 |
| PANEER BIRYANI | 150 |
| SOYA CHAAP BIRYANI | 150 |
| PANEER PEPPER FRY | 200 |



NOODLES

| | |
|----------------------------|-----|
| VEG NOODLES | 120 |
| GOBI NOODLES | 150 |
| MIXED VEG NOODLES | 170 |
| PANEER NOODLES | 150 |
| SCHEZWAN VEG NOODLES | 150 |
| SCHEZWAN GOBI NOODLES | 170 |
| SCHEZWAN MIXED VEG NOODLES | 190 |
| SCHEZWAN PANEER NOODLES | 170 |
| CHILLI GARLIC NOODLES | 150 |



*Additional charges of Rs.10/- applicable for parcel.